

# 2 Bedroom Mobile Home

'Tuileries'



Make: Helios



32 m<sup>2</sup> + 12 m<sup>2</sup> of decking

Sleeps: 4-6 persons

2 bedrooms



*Specially designed to meet the needs of persons with disabilities, this mobile home offers a spacious volume and generous circulation space in all rooms, making it ideal for family holidays too.*



## L-SHAPED LIVING ROOM WITH KITCHEN CORNER:

**Living room:** fixed table and bed settee (bed dimensions 130 x 190 cm), spacious circulation area, television.

**Fully equipped kitchen** (double-door 215L fridge-freezer, electric hob, microwave-grill, coffee maker, electric kettle), **low worktop to accommodate wheelchair users.**



## MASTER BEDROOM:

Double bed (140 x 190 cm), removable bedside tables, wardrobe with sliding doors.

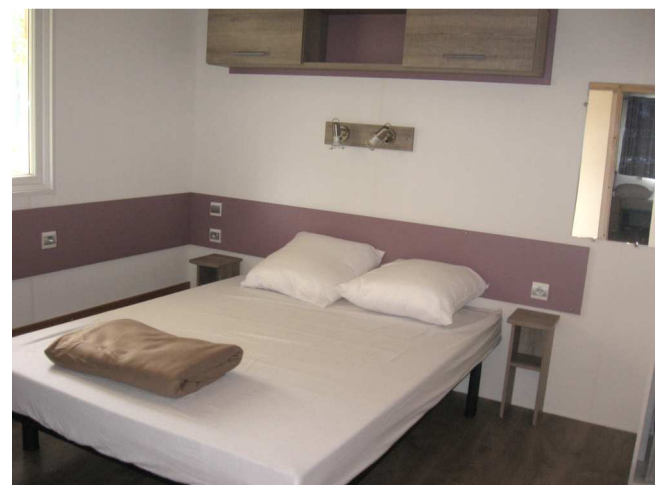
## CHILDREN'S BEDROOM:

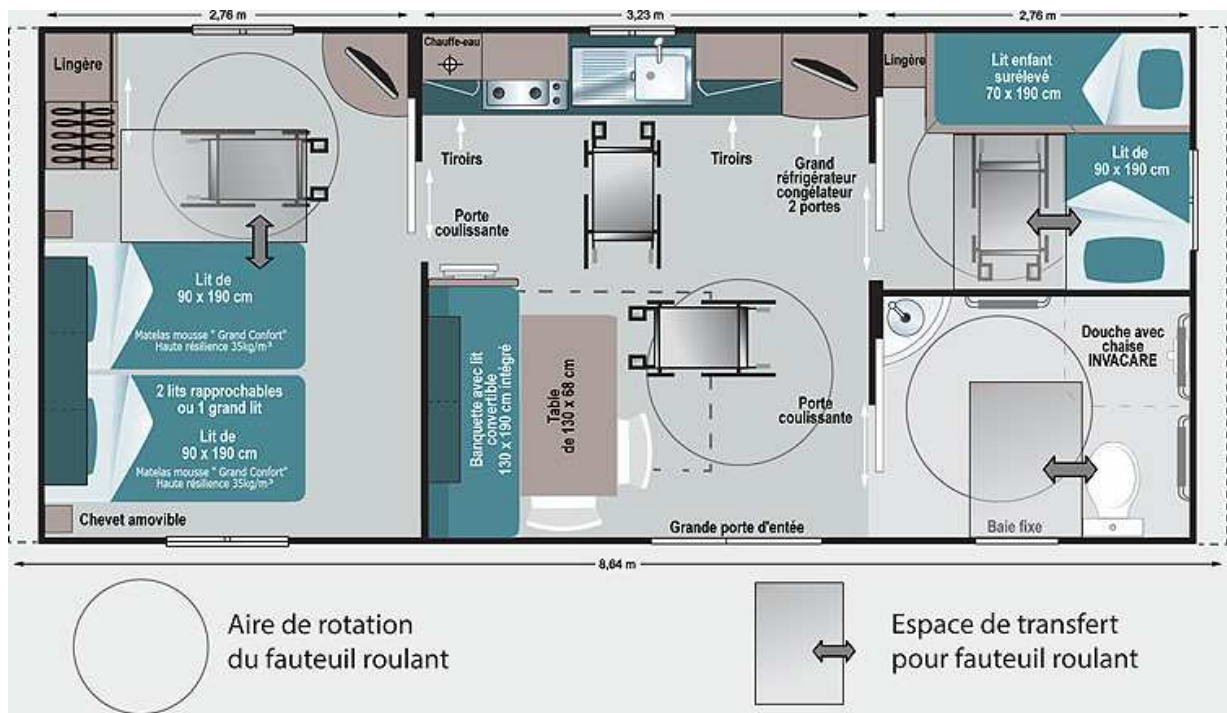
1 single bed (90 x 190 cm) and 1 cabin bed (70 x 190 cm), 1 linen cupboard and removable bedside table.



## BATHROOM/WC:

- Floor-level, watertight, thermoformed shower room with integrated WC.
- Disabled access shower with curtain and thermostatically controlled tap.
- 'Invacare' medical shower chair suitable for a wide range of disabilities (converts into a stool).





## ACCESSIBILITY FEATURES



- All rooms offer wheelchair access
- Low worktop in kitchen
- Sliding doors to rooms and wardrobes
- 'Wet' room with floor-level shower equipped for disabled persons and integrated WC
- Equipped in contrasting colours to aid the visually impaired

***Mobile homes are non-smoking and pets are not allowed. Thank you for your understanding.***